

FLOAT COLLAR

APPLICATION

Float Collar is designed to prevent the backflow of cement from entering the casing. The tool is placed one to three joints above the guide shoe or float shoe.

- Vertical, directional and horizontal wells.

FEATURES AND BENEFITS

- All internal parts are PDC-drillable.
- Acid-resistant material.

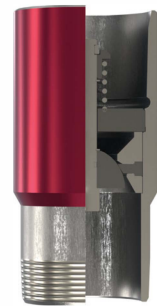
SUPPLY PACKAGE

- Float Collar.

TECHNICAL DATASHEET

| TECHNICAL CHARACTERISTICS | VALUE | | | | | |
|-----------------------------|-------|-------|-------|-------|-------|-------|
| Liner size, in | 4.000 | 4.500 | 5.000 | 5.500 | 5.750 | 7.000 |
| Differential Pressure, psi | 497 | | | | | |
| Max OD, in | 4.331 | 5.000 | 5.563 | 6.063 | 6.535 | 7.677 |
| Min ID, in | 3.465 | 3.898 | 4.409 | 4.764 | 5.000 | 4.409 |
| Material* | P-110 | | | | | |
| Max working temperature, °F | 302 | | | | | |
| Tensile, kip | 157 | 202 | 213 | 292 | 310 | 342 |
| Compression, kip | 110 | 142 | 146 | 205 | 220 | 146 |
| Max. length, ft | 0.8 | 0.8 | 1.0 | 1.2 | 1.2 | 1.4 |

* Other options are available as per Customer request.



FLOAT COLLAR